



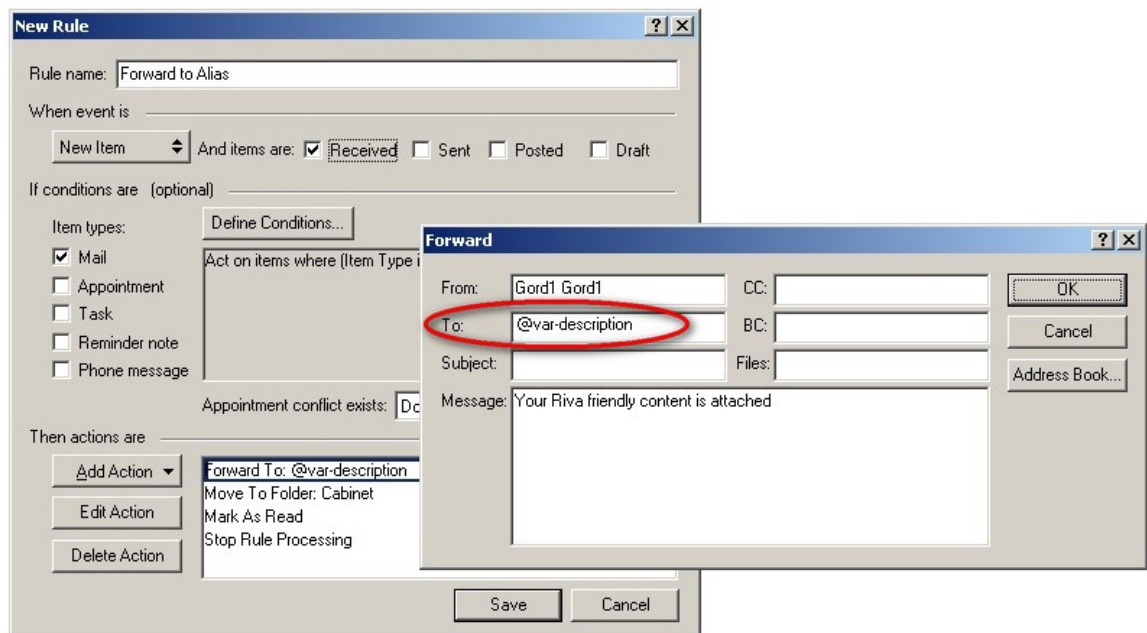
## Riva Managed Rules Support for Variables

You can use a Riva Managed Rules policy to automatically forward a copy of an email to a specified alias email address, provided that address is configured for each target eDirectory user:

1. In ConsoleOne, open the properties of each user account and add the individual's email address that you want to forward the email to. You can use any available field that has or can have an LDAP value mapped to it. In this example, we used the "Description" field.

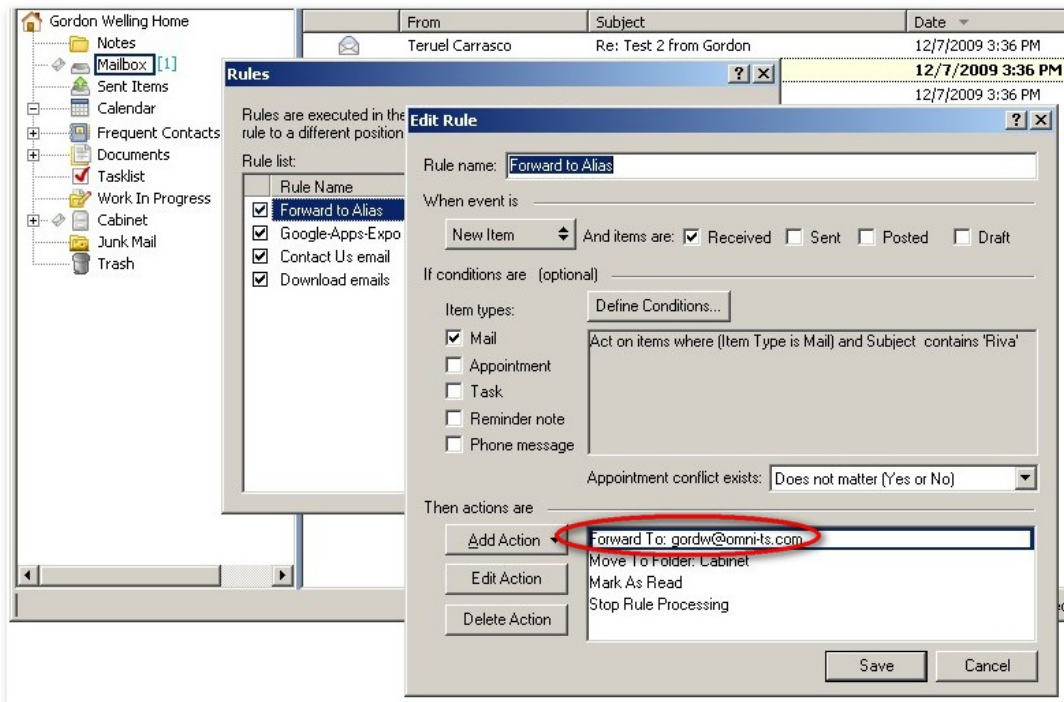
A screenshot of the 'Properties of gordon' dialog box in ConsoleOne. The dialog has a title bar with 'Properties of gordon' and a close button. Below the title bar are tabs for 'General', 'GroupWise', 'Restrictions', 'Memberships', 'Security Equal To Me', 'Login Script', and 'NDS Rights'. The 'General' tab is selected, and the 'Identification' sub-tab is active. The form contains several fields: 'Given name' (Gordon), 'Last name' (Welling), 'Full name' (empty), 'Qualifier' (empty), 'Middle initial' (empty), 'Other name' (empty), 'Title' (empty), 'Location' (Vancouver), 'Department' (Graphic Design), 'Telephone' (711-542-8803), 'Fax Number' (858-551-6173), 'E-Mail Address' (Gordon.Welling@demo.omni-ts.com), and 'Description' (gordw@omni-ts.com). The 'Description' field is circled in red. At the bottom are buttons for 'Page Options...', 'OK', 'Cancel', 'Apply', and 'Help'.

- Using a GroupWise client, proxy into the GroupWise account that will be used as the source account for the Managed Rules policy. Create a GroupWise **Forward to Alias** rule that selects incoming mail based on the desired conditions. Add an action that forwards the email to **@var-description**. You can add other desired actions like moving the mail to a specified existing folder in the cabinet and **Stop Rule Processing**.



**Note:** The **@var-xxxx** is a feature added in Riva 2.3.4 that supports adding an **@var-<ldap-label>** where <ldap-label> is the ldap value of the eDirectory attribute being used to store information, in this case an external email address like a [name@gmail.com](mailto:name@gmail.com). Riva will read the **@var-xxxx** value placed in a forward rule in the source GroupWise account and translate that to the applicable email address stored in the designated eDirectory attribute matching the <ldap-label> for the destination accounts of a Riva Managed Rule. For example: if the email address was stored in the eDirectory "Description" attribute, then you would use the ldap value "description" for that eDirectory attribute. If you are not sure what the ldap attribute label is for the eDirectory attribute being used, you can use a standard ldap browser tool like Softerra LDAP Browser to identify the correct ldap attribute label.

- Execute this policy to distribute the **Forward to Alias** rule to the Destination accounts, each which will translate the **@var-description** to use the value in the individual's eDirectory "Description" attribute.



## Best Practices for Riva Managed Rules Policies

Here are recommended best practices:

- Test, test, and test. When creating a new policy, use a sample group or container as a destination to ensure that the destination options are working as desired. Once the policy is confirmed, the destination objects can be changed to identify the desired set of users.
- Use eDirectory objects for destination. Although Managed Rules policies allow the use of GroupWise objects (post offices and domains), this support is for those environments that create GroupWise accounts without creating corresponding eDirectory accounts. Using **@var-<ldap-attribute>** will not work for GroupWise-only type accounts.

## Additional Information

You can refer to the following links for additional information about Riva:

- Flash Based Tutorials - <http://www.omni-ts.com/quicktours/>
- Home page for Riva Policies - <http://www.omni-ts.com/policies/>
- Riva Documentation - <http://www.omni-ts.com/documentation/messaging/>
- Riva Tips (from our Riva Support Forum) - <http://www.omni-ts.com/forum/post--2055--page-1.html>